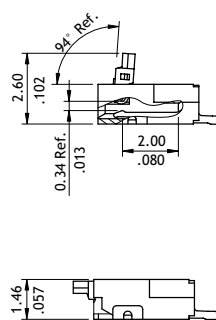
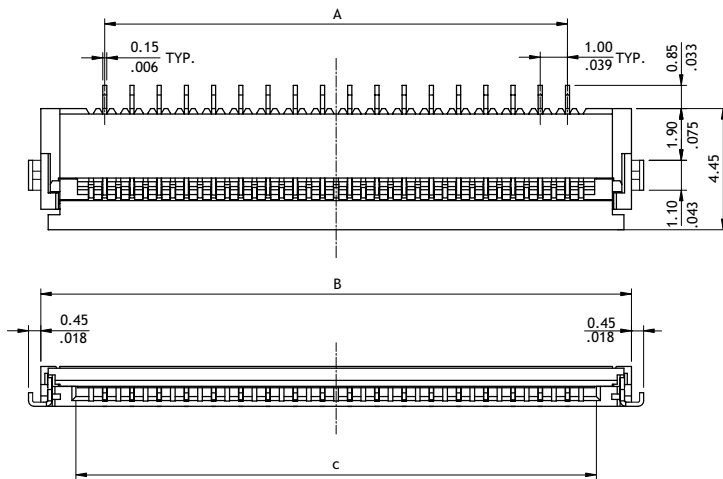
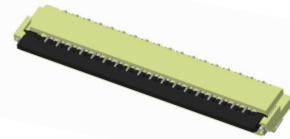
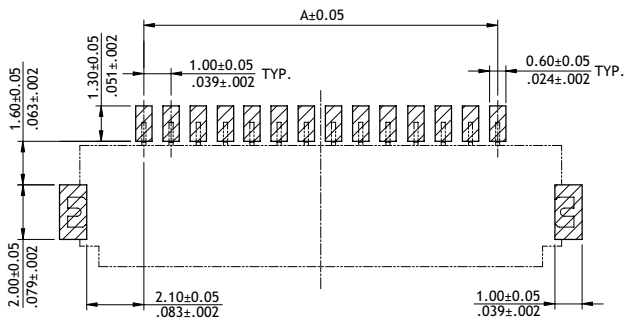
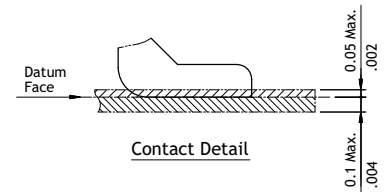


CF50 Series 1.00mm(.039")H=1.46 SMT ZIF One-Touch FFC/FPC Connectors

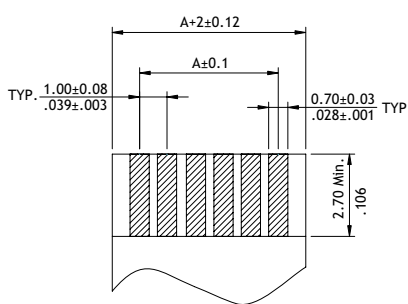
- 1.46mm above the board
- FFC/FPC zero insertion force and high retention force
- Insulation: High temperature plastic UL 94V-0, Color Nature
- Cover: High temperature plastic UL 94V-0, Color Black
- Actuator designed easy for FFC/FPC installation and reliable operation
- With metal fixed tabs to secure connector in place



A = 1.0 x No. of Spaces
 B = A + 4.7
 C = A + 2.12



Recommended P.C. Board Layout



Recommended FPC/FFC Dimension
 (Thickness: 0.3±0.03mm)

Ordering Code

① ② ③ ④ ⑤ ⑥ ⑦ ⑧ ⑨
CF50 261 D0R0 - 10 - NH

- ① Series No.
- ② No. of Circuits: 04 to 30
 (Available: 4,6,8,10,18,24,26,30)
 Circuits not found above please consult manufacturer

- ③ Plating Code:
 1 = Matte Tin over Nickel
 F = Selective Gold flash over Nickel
- ④ Contact Style:
 D = Downside Contact
- ⑤ Color: 0 = Nature

- ⑥ Packing: R = Tape & Reel
- ⑦ Other Options:
 0 = Standard
- ⑧ Pitch: 10 = 1.00 mm
- ⑨ -NH = For Lead Free IR process and Halogen-Free