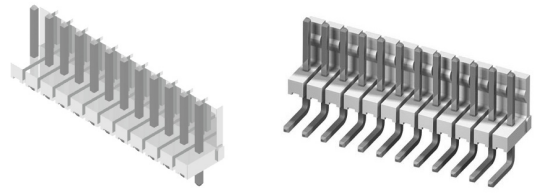
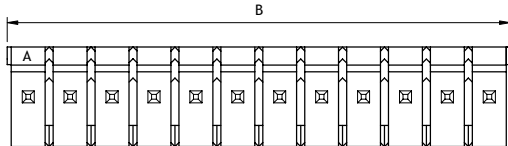


**CI82 Series 3.96mm(.156") Friction Lock Breakway Headers**

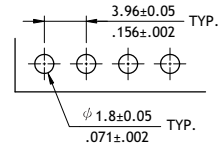
- Options with straight and right angle tails
- Available with flat back wall for polarization
- Mate most of 3.96mm pitch connector in the market
- Insulator: Glass filled polyester UL 94V-0, Color White
- With Tin plated 1.14mm square pin



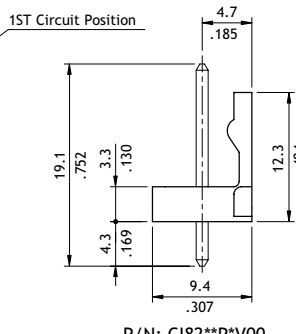
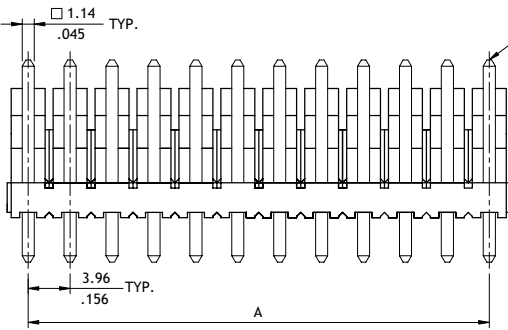
**RoHS Compliant**



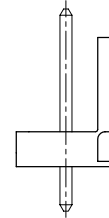
A = 3.96 x No. of Spaces  
B = A + 3.96



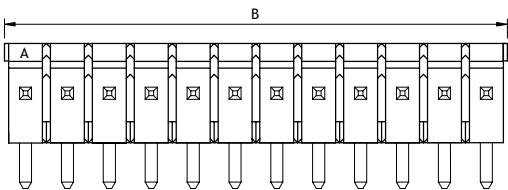
Recommended P.C. Board Layout



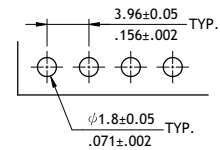
P/N: CI82\*\*P\*V00



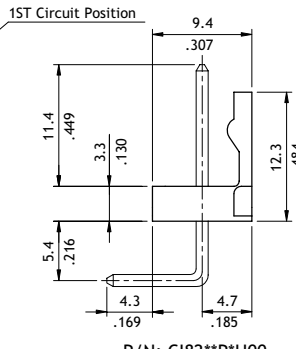
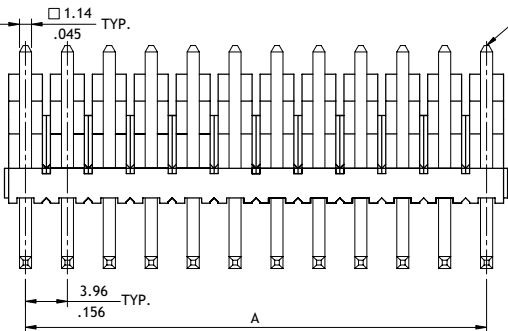
P/N: CI82\*\*P\*V0L



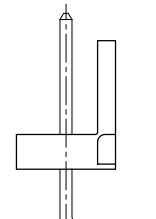
A = 3.96 x No. of Spaces  
B = A + 3.96



Recommended P.C. Board Layout



P/N: CI82\*\*P\*H00



P/N: CI82\*\*P\*H0L

**Ordering Code**

**1** **2** **3** **4** **5** **6**  
**CI82 24 P 1 V 00**

- 1** Series No.
- 2** No. of Circuits: 02 to 24
- 3** P = DIP Header
- 4** Plating Code:  
1 = Tin over Nickel
- 5** Type: V = Straight  
H = Right Angle
- 6** Other Options:  
00 = With Locking Ramp (Standard)  
0L = Without Locking Ramp  
\*Special options consult manufacturer