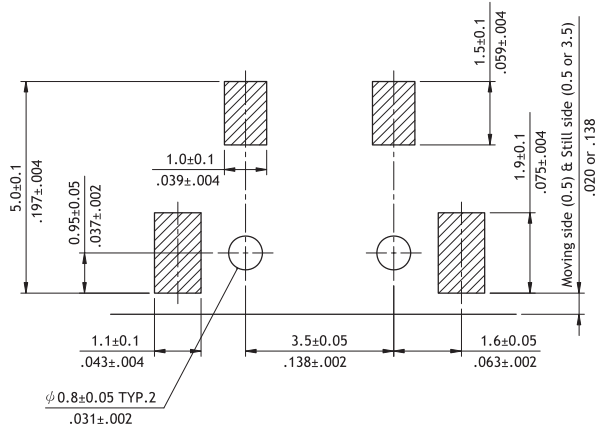
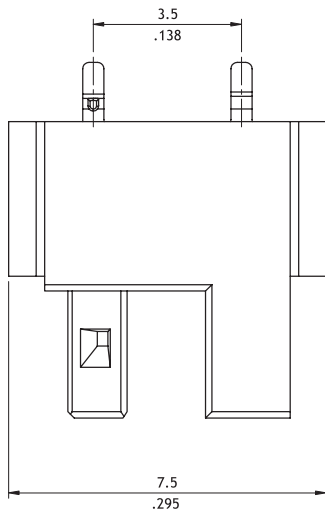
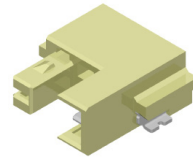


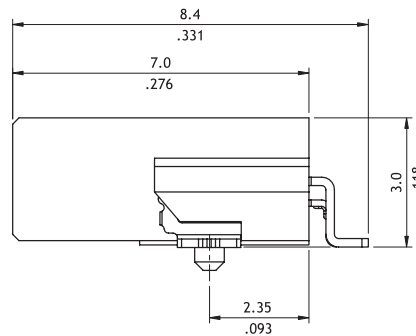
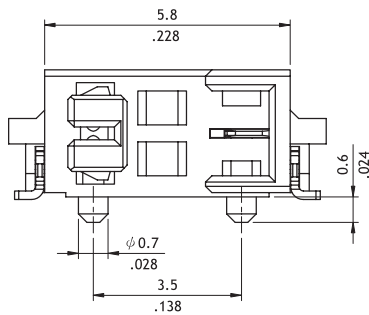
CIL1 Series 3.50mm(.138") Board to Board Connectors

- ⊙ Simplify manufacturing procedure
- ⊙ Reduce the Cost
- ⊙ Insulator: High temperature plastic UL 94V-0

NEW



Recommended P.C.B Layout



Ordering Code

① CIL1 ② 02 ③ M ④ 1 ⑤ H ⑥ R ⑦ 0 - ⑧ NH

- ① Series No.
- ② No. of Circuits: 02
- ③ M = SMT Type
- ④ Plating Code:
1 = Matte Tin over Nickel
- ⑤ Type: H = Side Entry
- ⑥ Packing Options:
R = Tape & Reel
- ⑦ Other Options:
0 = Standard
- ⑧ -NH = For Lead Free IR process and Halogen-Free and Halogen-Free