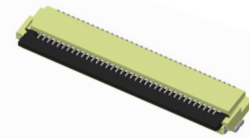
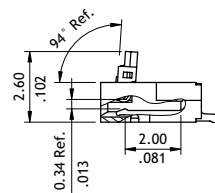
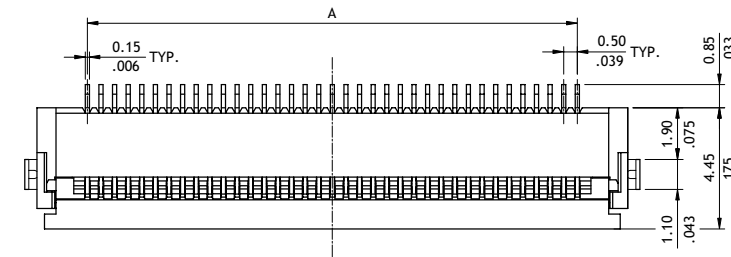


CF50 Series 0.50mm(.020")H=1.46 SMT ZIF One-Touch FFC/FPC Connectors

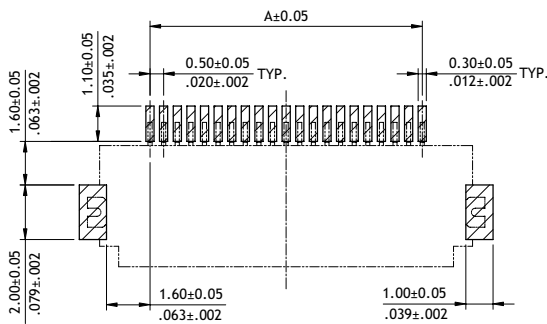
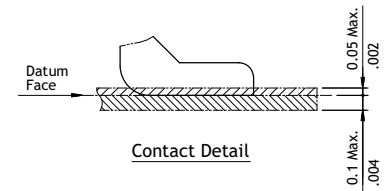
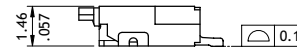
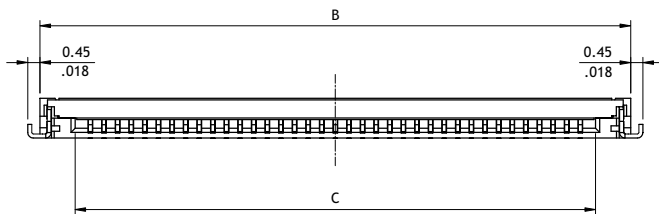
- ⊙ 1.46mm above the board
- ⊙ FFC/FPC zero insertion force and high retention force
- ⊙ Insulation: High temperature plastic UL 94V-0, Color Nature
- ⊙ Cover: High temperature plastic UL 94V-0, Color Black
- ⊙ Actuator designed easy for FFC/FPC installation and reliable operation
- ⊙ With metal fixed tabs to secure connector in place



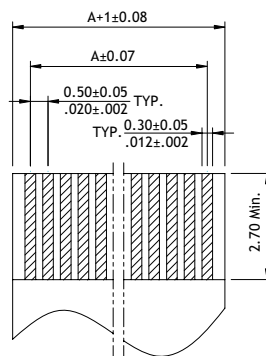
RoHS Compliant  



A = 0.5 x No. of Spaces
 B = A + 3.7
 C = A + 1.12



Recommended P.C. Board Layout



Recommended FPC/FPC Dimension
 (Thickness: 0.3±0.03mm)

Ordering Code

① **CF50** **②** **53** **③** **1** **④** **D** **⑤** **0** **⑥** **R** **⑦** **0** - **⑧** **05** - **⑨** **NH**

- | | | |
|---|---|---|
| <p>① Series No.</p> <p>② No. of Circuits: 04 to 61
 (Available: 4,6,8,9,10,11,12,13,14, 15,16,17,18,20,26,28, 30,36,37,40,49,53,61)
 Circuits not found above please consult manufacturer</p> | <p>③ Plating Code:
 1 = Matte Tin over Nickel
 F = Selective Gold flash over Nickel</p> <p>④ Contact Style:
 D = Downside Contact</p> <p>⑤ Color: 0 = Nature</p> | <p>⑥ Packing: R = Tape & Reel</p> <p>⑦ Other Options:
 0 = Standard</p> <p>⑧ Pitch: 05 = 0.50 mm</p> <p>⑨ -NH = For Lead Free IR process and Halogen-Free</p> |
|---|---|---|