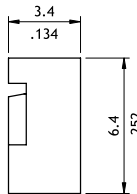
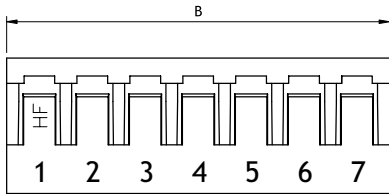
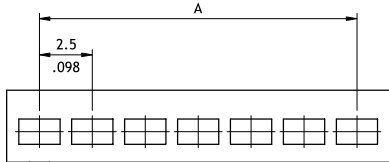
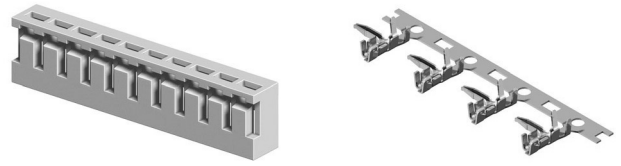
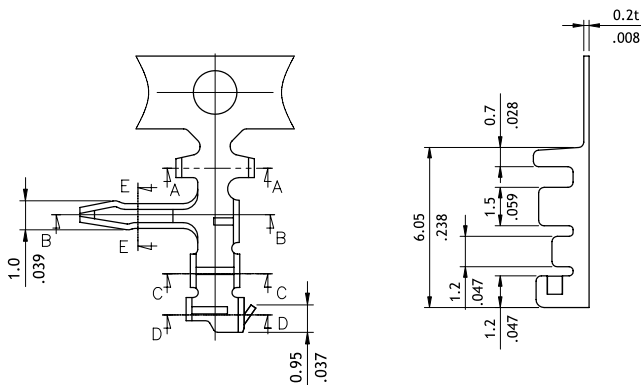


CI27 Series 2.50mm(.098") Board In Connectors

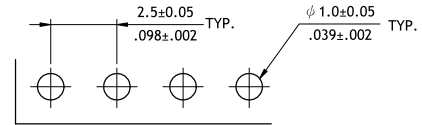
- Low profile with locking ribs
- Can be used CI27 Crimp Board in Terminal
- Terminal accommodated AWG #22 ~ #26
- Insulator: Nylon 66 UL 94V-0, Color Nature
- Terminal: Tin plated Phosphor Bronze



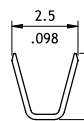
Circuits	Dimension	
	A	B
2	2.5(.098)	5.7(.224)
3	5.0(.197)	8.2(.323)
4	7.5(.295)	10.7(.421)
5	10.0(.394)	13.2(.520)
6	12.5(.492)	15.7(.618)
7	15.0(.591)	18.2(.717)
8	17.5(.689)	20.7(.815)
9	20.0(.787)	23.2(.913)
10	22.5(.886)	25.7(1.012)
11	25.0(.984)	28.2(1.110)
12	27.5(1.083)	30.7(1.209)
13	30.0(1.181)	33.2(1.307)
14	32.5(1.280)	35.7(1.406)
15	35.0(1.378)	38.2(1.504)
16	37.5(1.476)	40.6(1.598)



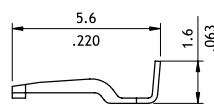
Wire Range	Insulation Diameter	Reel Qty
AWG #22-#26	1.6 (.063) MAX.	7,000 PCS



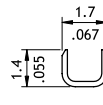
Recommended P.C. Board Layout



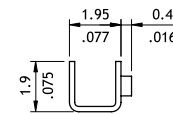
SEC.: A-A



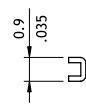
SEC.: B-B



SEC.: C-C



SEC.: D-D



SEC.: E-E

Ordering Code

1 CI27 **2** 16 **3** S **4** 0000

- ① Series No.
- ② No. of Circuits: 02 to 16
- ③ S = Housing
- ④ Other Options:
0000 = Standard

*Special options consult manufacturer

1 CI27 **2** T02 **3** 1 **4** P **5** EH

- ① Series No.
- ② Type: T02 = AWG #22 ~ #26
- ③ Plating Code: 1 = Tin over Nickel
- ④ Material: P = Phosphor Bronze
- ⑤ Other Options: EH = Right Angle Terminal