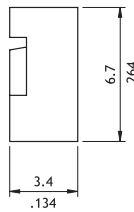
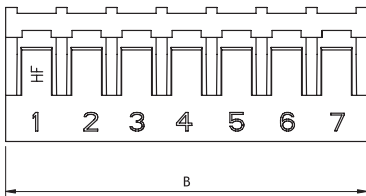
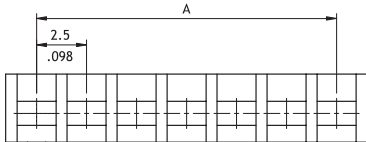
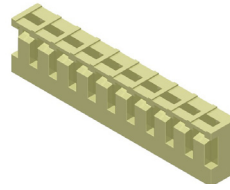
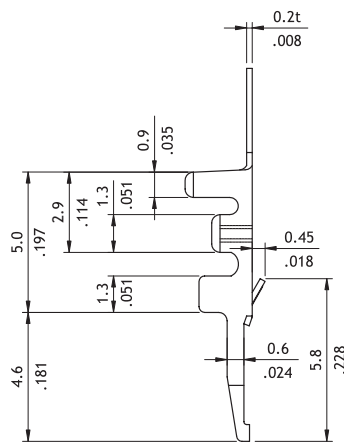
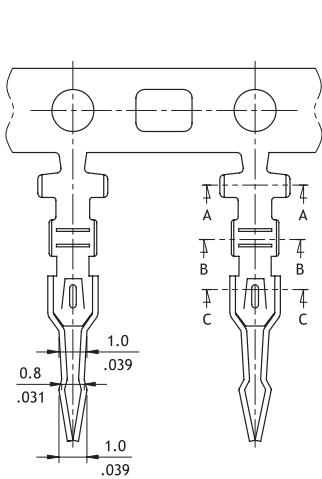


CI26 Series 2.50mm(.098") Board In Connectors

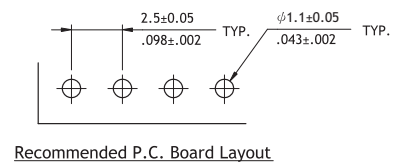
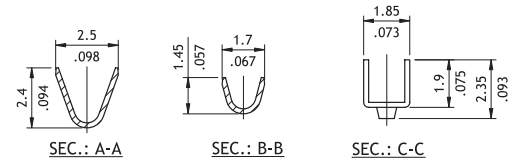
- ⊙ Mate with CI25 Housing
- ⊙ Can be used CI25 Crimp Clip Terminal
- ⊙ Terminal accommodated AWG #22~ #28
- ⊙ Insulator: Nylon 66 UL 94V-0, Color Ivory
- ⊙ Terminal: Tin plated Phosphor Bronze



Circuits	Dimension	
	A	B
2	2.5(.098)	5.6(.220)
3	5.0(.197)	8.1(.389)
4	7.5(.295)	10.6(.417)
5	10.0(.394)	13.1(.516)
6	12.5(.492)	15.6(.614)
7	15.0(.591)	18.1(.713)
8	17.5(.689)	20.6(.811)
9	20.0(.787)	23.1(.909)
10	22.5(.886)	25.6(1.008)
11	25.0(.984)	28.1(1.106)
12	27.5(1.083)	30.6(1.205)
13	30.0(1.181)	33.1(1.303)
14	32.5(1.280)	35.6(1.402)
15	35.0(1.378)	38.1(1.598)
16	37.5(1.476)	40.6(1.598)



Wire Range	Insulation Diameter	Reel Q'ty
AWG #22-#26	1.6 (.063) MAX.	10,000 PCS



Ordering Code

1 CI26 **2** 16 **3** S **4** 0000

- ① Series No.
- ② No. of Circuits: 02 to 16
- ③ S = Housing
- ④ Other Options:
0000 = Standard
*Special options consult manufacturer

1 CI26 **2** T02 **3** 1 **4** P **5** E0

- ① Series No.
- ② Type: T02 = AWG #22 ~ #26
- ③ Plating Code: 1 = Tin over Nickel
- ④ Material: P = Phosphor Bronze
- ⑤ Other Options: E0 = Standard