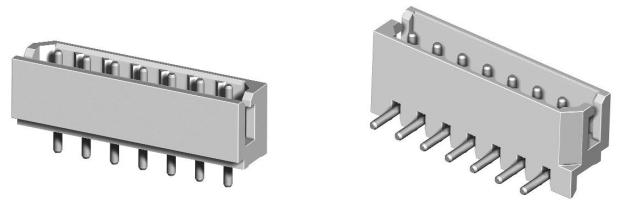
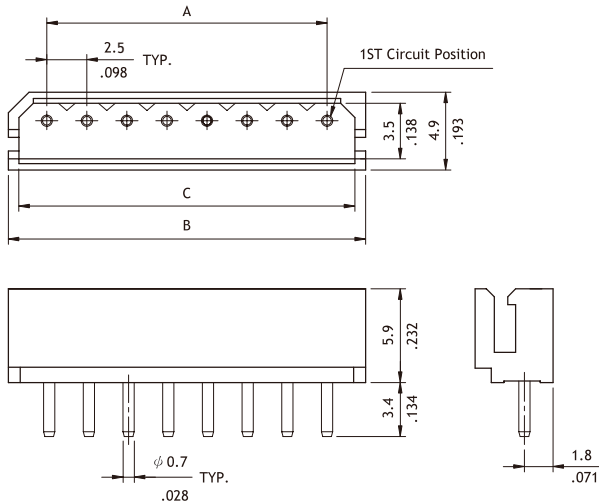


CI25 Series 2.50mm(.098") Wire to Board Connectors DIP Headers

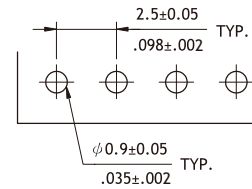
- With locking slot
- Mate with CI25 Housing
- Insulator: Polyamide UL 94V-0, Color Nature
- With Tin plated 0.7mm round pin



Straight

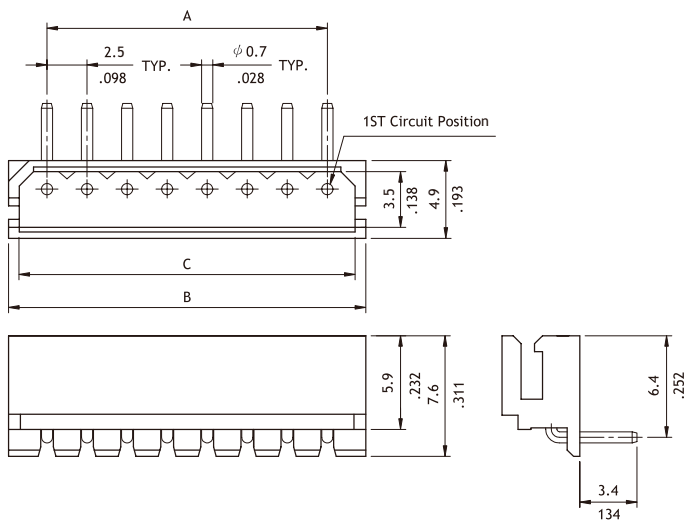


A = 2.5 x No. of Spaces
 B = A + 5.0
 C = A + 3.6

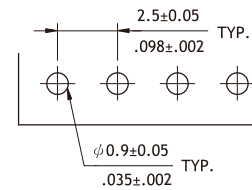


Recommended P.C. Board Layout

Right Angle



A = 2.5 x No. of Spaces
 B = A + 5.0
 C = A + 3.6



Recommended P.C. Board Layout

Ordering Code

① CI 25 ② 1 5 ③ P ④ 1 ⑤ V ⑥ 0 0 - ⑦ NH

- ① Series No.
- ② No. of Circuits: 02 to 15
- ③ P = DIP Type
- ④ Plating Code: 1 = Matte Tin over Nickel
- ⑤ Type: V = Straight
H = Right Angle
- ⑥ Other Options:
00 = Standard
*Special options consult manufacturer
- ⑦ -LF = For Lead Free soldering process
-NH = For Lead Free soldering process and Halogen-Free