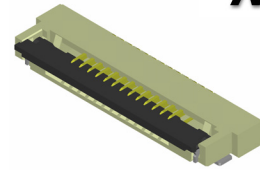


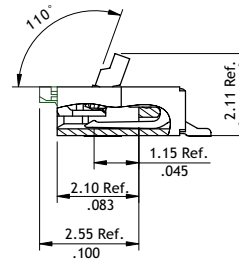
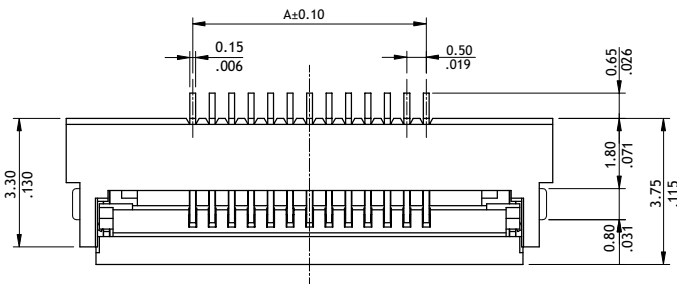
CF55 Series 0.50mm(.020")H=1.25 SMT ZIF FFC/FPC Connectors

- 1.25mm above the board
- FFC/FPC zero insertion force and high holding force
- Insulation: High temperature plastic UL 94V-0, Color Nature
- Cover: High temperature plastic UL 94V-0, Color Black
- Actuator designed easy for FFC/FPC installation and reliable operation
- With metal fixed tabs to secure connector in place

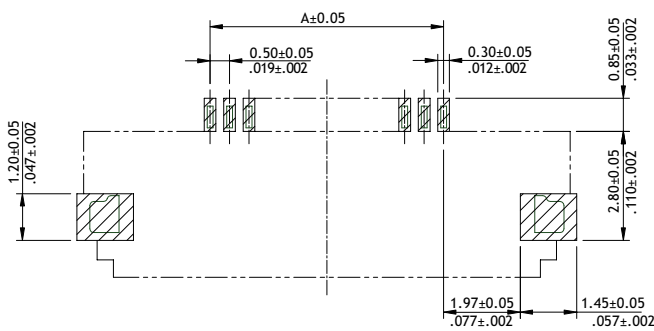
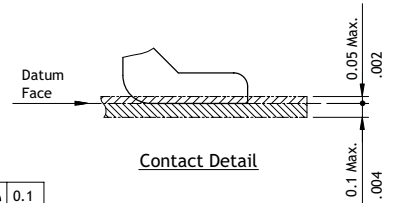
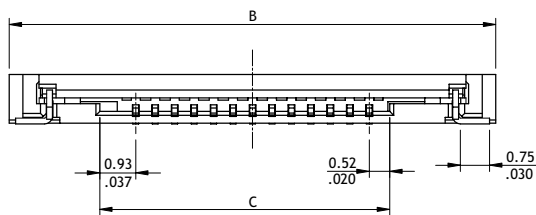
NEW



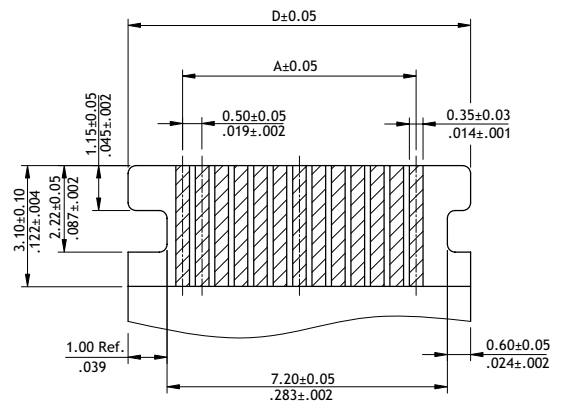
RoHS Compliant



A = 0.5 x No. of Spaces
 B = A + 6.5
 C = A + 1.45
 D = A + 2.8



Recommended P.C. Board Layout



Recommended FPC/FFC Dimension
 (Thickness: 0.3±0.03mm)

Ordering Code

① CF **②** 55 **③** 12 **④** 1 **⑤** D **⑥** 0 **⑦** R **⑧** 0 - NH

- ①** Series No.
- ②** No. of Circuits: 06 to 14
 (Available: 6,11,12,13,14)
 Circuits not found above please consult manufacturer
- ③** Plating Code:
 1 = Matte Tin over Nickel
 F = Selective Gold Flash over Nickel
- ④** Contact Style:
 D = Downside Contact
- ⑤** Color: 0 = Nature
- ⑥** Packing:
 R = Tape & Reel
- ⑦** Other Options:
 0 = Without Mylar (Standard)
- ⑧** -NH = For Lead Free IR process and Halogen-Free