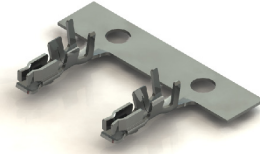
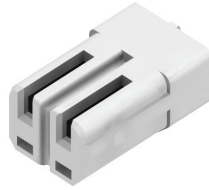


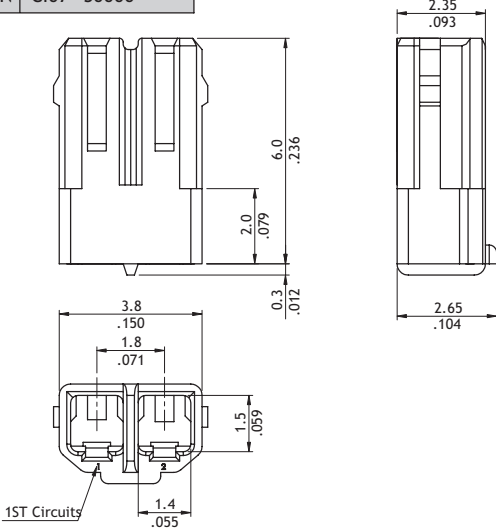
**CI07 Series 1.80mm(.071") Wire to Board Connectors Housing & Terminal**

- Mate with CI07 Header
- Can be used CI07 Crimp Clip Terminal
- Insulator: Polyamide UL 94V-0, Color Nature

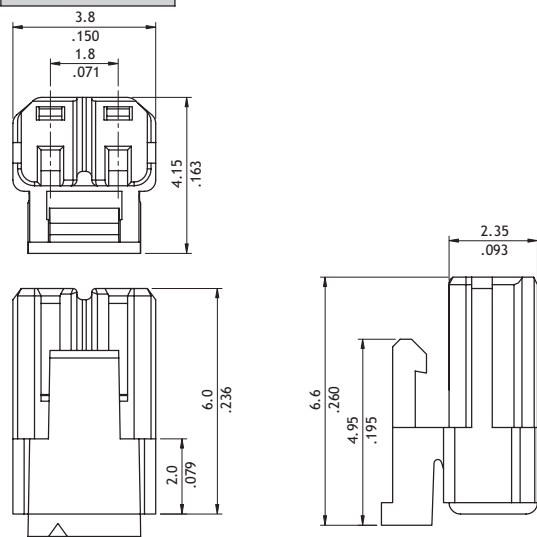
RoHS Compliant  



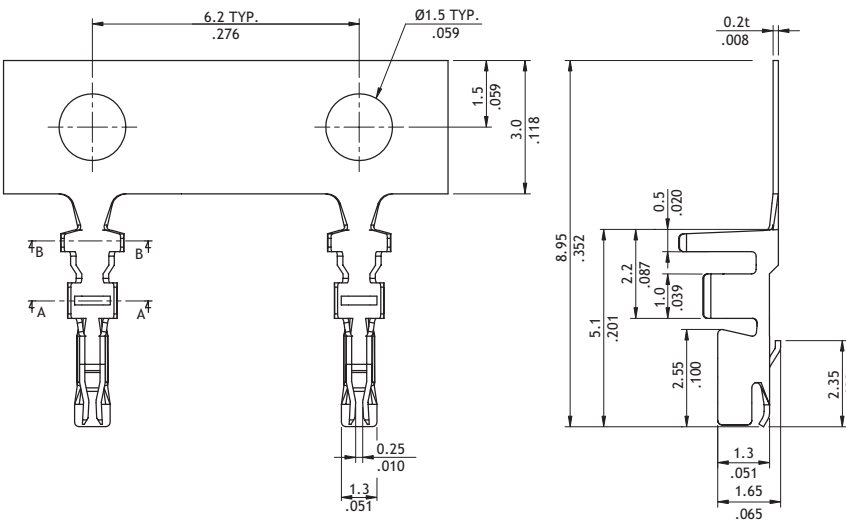
P/N CI07\*\*S0000



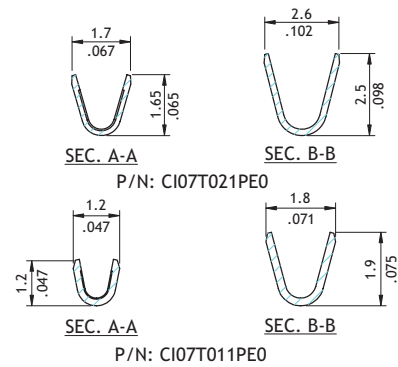
P/N CI07\*\*SL000-NH



P/N CI07T021PE0



Wire Range	Insulation Diameter	Reel Qty
AWG #22-#26	0.95-1.3(mm) (.037-.051)	10,000 PCS
AWG #28-#30	0.88-0.95(mm) (.035-.037)	10,000 PCS



**Ordering Code**

**1** CI07 **2** 02 **3** S **4** 0000

- ① Series No.
- ② No. of Circuits: 02
- ③ S = Housing
- ④ Other Options:  
0000 = Without Locking Latch  
L000-NH = With Locking Latch

**1** CI07 **2** T02 **3** 1 **4** P **5** E **6** 0

- ① Series No.
- ② Type: T01 = AWG #28 ~ #30  
T02 = AWG #22 ~ #26
- ③ Plating Code: 1 = Tin Plated
- ④ Material: P = Phosphor Bronze
- ⑤ Plating Method: E = Pre-tinned
- ⑥ Other Options: 0 = Standard