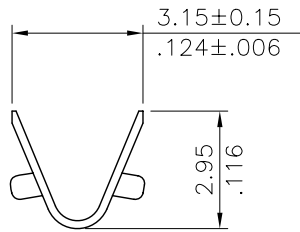


Wire Range	Insulation Diameter	Reel Q'ty
AWG #18x2	2.05 (.079) MAX	3,500 PCS

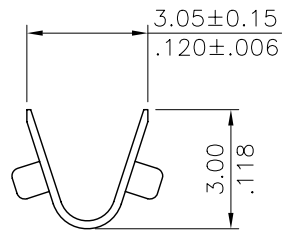
Ordering Code:

CT10 TA3 1 P E 0
 ① ② ③ ④ ⑤ ⑥

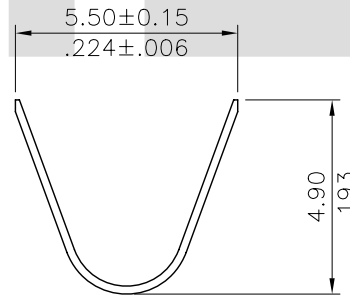
- ① Series No.
- ② Type: TA3= AWG #18x2
- ③ Plating: 1= 2.03μm(80μ") Min. Tin over 0.76μm(30μ") Nickel
- ④ Material: P= Phosphor Bronze
- ⑤ Plating method: E= Pre-tinned
- ⑥ Option: 0= Standard



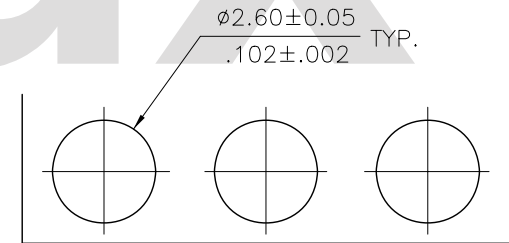
SEC:A-A



SEC:B-B



SEC:C-C



Recommended P.C. Board Layout

RoHS Compliant

- 4
- 3
- 2
- 1



DRAWN BY:		DATE
Rita	3/26/02'	
ENGINEER:	David	3/26/02'
CHECKED BY:	David	3/26/02'
APPROVED BY:	David	3/26/02'

UNIT: mm / inch	
TOLERANCE UNLESS OTHERWISE SPECIFIED	
.X ± 0.20/.008	X* ± 1'
.XX ± 0.10/.004	.X* ±
.XXX ± 0.05/.002	.XX* ±

TITLE:	BOARD IN TERMINAL
MATERIAL:	
FINISH:	



瀚荃股份有限公司
CviLux Corporation

DRAWING NO.	CT1001SC	PART NO.	CT10TA31PE0
SCALE	6 / 1	SHEET	1 OF 1