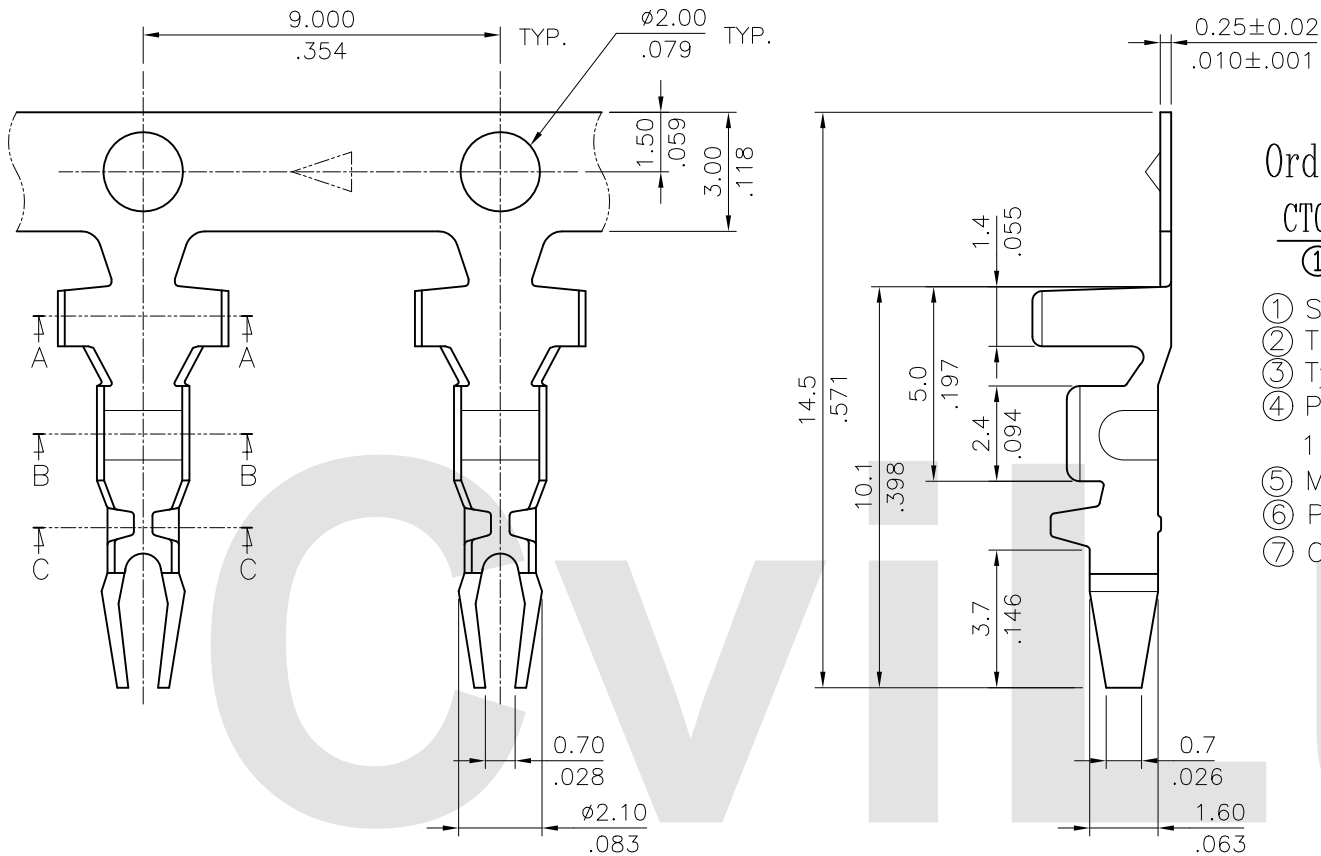


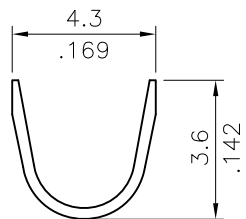
Wire Range	Insulation Diameter	Reel Q'ty
AWG #18~#24	2.65 (.104) MAX.	5,000 PCS.



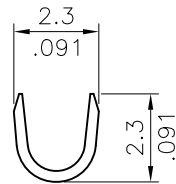
Ordering Code:

CT05 T 03 1 P E 0
① ② ③ ④ ⑤ ⑥ ⑦

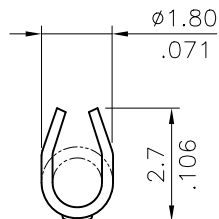
- ① Series No.
- ② T= Terminal
- ③ Type:Crimping style- 03 for AWG#18~#24
- ④ Plating Code:
1= 2.54 μ m(100 μ) Min. Tin over 0.76 μ m(30 μ) Nickel
- ⑤ Material: P= Phosphor Bronze
- ⑥ Plating method: E= Pre-tinned
- ⑦ Other option: 0= Standard



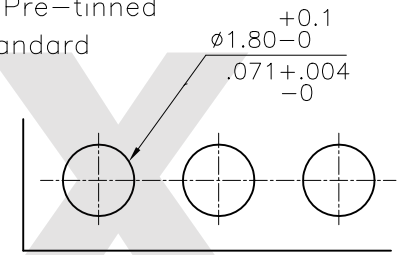
SEC.: A-A



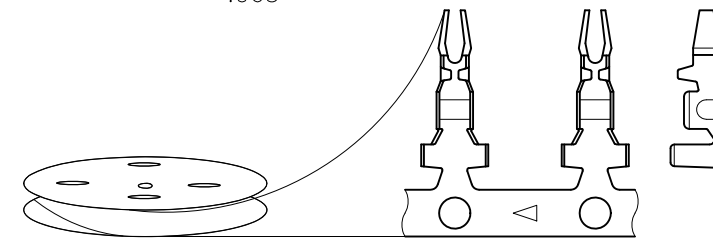
SEC.: B-B



SEC.: C-C




Recommended P.C. Board Layout



\triangle PULL OUT DIRECTION(PLATED)

RoHS Compliant

SYM	NAME	DATE	REVISIONS	APPROVED BY:	DATE	UNIT: mm / inch	TITLE:	 瀚荃股份有限公司 CviLux Corporation
④						UNIT: mm / inch	BOARD IN TERMINAL	
③						TOLERANCE UNLESS OTHERWISE SPECIFIED	MATERIAL:	
②	Karen	6/13-15'	ECNT115140/ECRT115017	ENGINEER:	Sun	.X ± 0.20/.008 X' ± 1'	FINISH:	
①	Sandy	1/13/06'	ECN06007/ECR06004-0	CHECKED BY:	Eisley	.XX ± 0.10/.004 X' ±	DRAWING NO. CT0501SF	PART NO. CT05T031PE0
				APPROVED BY:	Eisley	.XXX ± 0.05/.002 XX' ±	SCALE 5 / 1	SHEET 1 OF 1

