

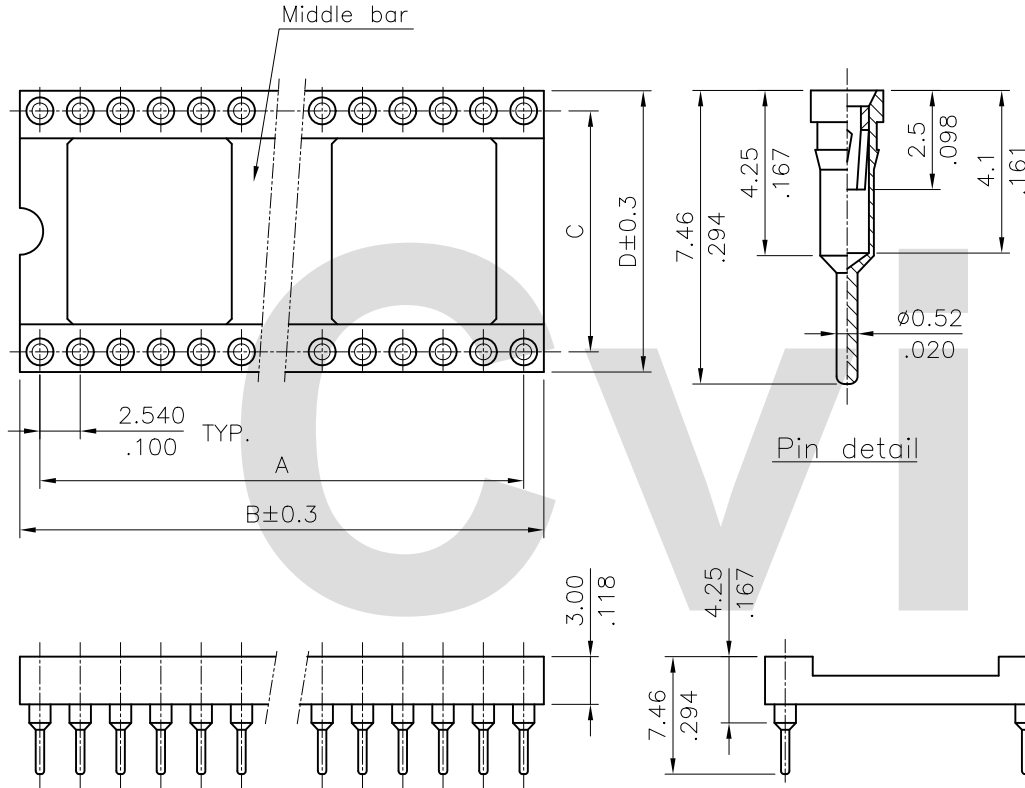
Material:

* Insulation: Glass filled polyester UL 94V-0, Color Black

* Pin:

Outer sleeve: Brass, machined

Inner 4 finger contact: Beryllium Copper, heat treated

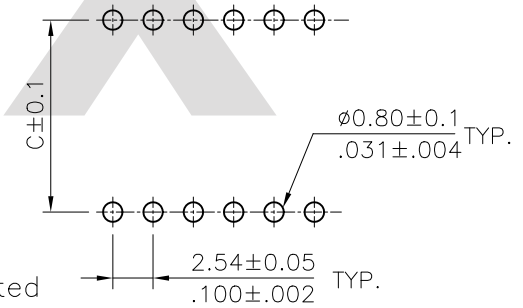


Circuits	CviLux P/N	Dimension			
		A	B	C	D
6	CS0706D1000	5.08(.200)	7.62(.300)	7.62(.300)	10.04(.395)
8	CS0708D1000	7.62(.300)	10.16(.400)	7.62(.300)	10.04(.395)
14	CS0714D1000	15.24(.600)	17.78(.700)	7.62(.300)	10.04(.395)
16	CS0716D1000	17.78(.700)	20.32(.800)	7.62(.300)	10.04(.395)
18	CS0718D1000	20.32(.800)	22.86(.900)	7.62(.300)	10.04(.395)
20	CS0720D1000	22.86(.900)	25.40(1.000)	7.62(.300)	10.04(.395)
24	CS0724D1000	27.94(1.100)	30.48(1.200)	7.62(.300)	10.04(.395)
	CS0724D1A00			15.24(.600)	17.72(.698)
28	CS0728D1000	33.02(1.300)	35.56(1.400)	7.62(.300)	10.04(.395)
	CS0728D1A00			15.24(.600)	17.72(.698)
32	CS0732D1A00	38.10(1.500)	40.64(1.600)	15.24(.600)	17.72(.698)
40	CS0740D1A00	48.26(1.900)	50.80(2.000)	15.24(.600)	17.72(.698)
42	CS0742D1A00	50.80(2.000)	53.34(2.100)	15.24(.600)	17.72(.698)
48	CS0748D1A00	58.42(2.300)	60.96(2.400)	15.24(.600)	17.72(.698)

Ordering Code

CS07 ** D 1 *00
 ① ② ③ ④ ⑤

- ① Series No.
- ② Circuits:
- ③ Plating Code :
 D= Tin plated sleeve with
 0.25um(10uin) Gold plated
- ④ Color : 1= Black
- ⑤ Option :



Recommended P.C. Board Layout

000: Dim. D= 10.04mm
 A00: Dim. D= 17.72mm(Middle bar)

RoHS Compliant

SYM	NAME	DATE	REVISIONS	APPROVED BY:	DATE	UNIT: mm / inch	TITLE:	DRAWING NO.	PART NO.	SHEET	OF	1
4							2.54MM(.100") DIP SOCKET	CS0701SG	CS07**D1*00	1	OF	1
3												
2	Karen	1/20-15'	ECNT115011/ECRT114110	SUN	1/20-15'	.X ± 0.30 / .012						
1	Sandy	8/1/05'	ECN05262	EISLEY	1/23-15'	.XX ± 0.20 / .008						
				DAVID	1/23-15'	.XXX ± 0.10 / .004						

CIVILUX CORP
 2015.01.29
 ISSUED

瀚荃股份有限公司
 CviLux Corporation