

No.	DESCRIPTION	MATERIAL	FINISH	Q'TY
1	BODY	BRASS	GOLD PLATED	1
2	INSULATOR	TEFLON	-	1
3	CONTACT	BRASS	GOLD PLATED	1
4	FERRULE	BRASS	GOLD PLATED	1

Specifications:

Electrical

Impedance: 50Ω

Frequency Range: 0-6 GHz

Working Voltage: 170 VRMS Max.

Dielectric Withstanding Voltage: 500 VRMS Min.

VSWR: 1.3 Max.

Contact Resistance

Center contact: 5mΩ Max.

Outer Contact: 2.5mΩ Max.

Insulator Resistance: 1000MΩ Min.

Mechanical & Environmental

Engagement Force: 3.4 lbs. Max.

Disengagement Force: 1.4-3.4 lbs.

Contact Retention: 2.3 lbs. Min.

Durability (Mating): 500 cycles Min.

Temperature Range: -65°C to 155°C

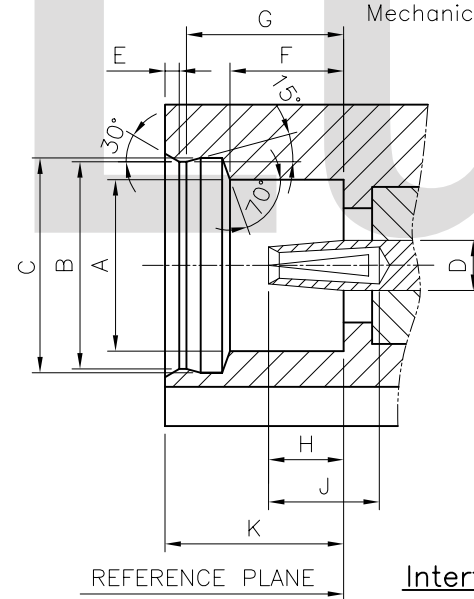
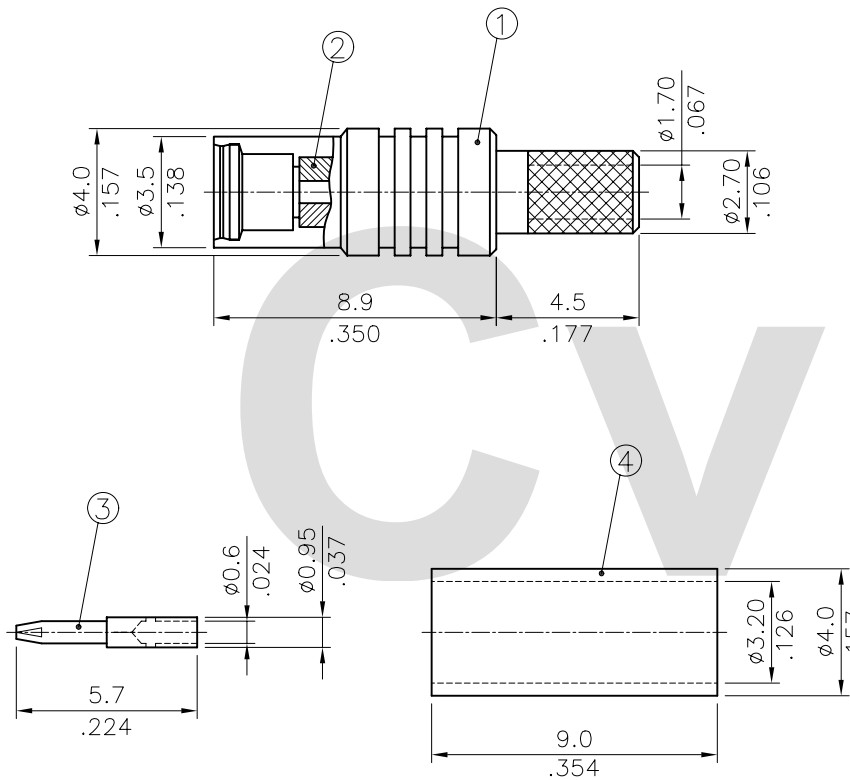
Vibration: 3 cycles, 3 opposite directions, 10-150 Hz

10-60 Hz: 0.75mm/0.030 in., 60-150 Hz 10G's

Thermal Shock: MIL-STD-202 Method 107

Humidity: MIL-STD-202 Method 103 Test Cond.B

Mechanical Shock: MIL-STD-202 Method 213 Test Cond.B

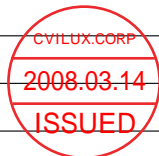


DIM.	Min.	Max.
A	2.41(.095)	-
B	2.87(.113)	2.90(.114)
C	3.00(.118)	3.04(.120)
D	0.68(.026)	0.72(.028)
E	-	0.23(.009)
F	1.57(.062)	1.63(.064)
G	2.30(.091)	2.34(.092)
H	0.90(.035)	1.20(.047)
J	1.40(.055)	-
K	2.60(.102)	-

Interface Mating Dimensions

RoHS Compliant

SYM	NAME	DATE	REVISIONS	APPROVED BY:	DATE	UNIT: mm / inch	TITLE: MMCX SERIES STRAIGHT CABLE CRIMP TYPE JACK CONN.	DRAWING NO. CR0405SA	PART NO. CR04S01225000
4									
3				DRAWN BY: Sun	3/13-08'	TOLERANCE UNLESS OTHERWISE SPECIFIED			
2				ENGINEER: Eisley	3/13-08'	X. ±0.50/.020 X' ± 1"			
1				CHECKED BY: David	3/14-08'	.X ±0.30/.012 .X' ±			
				APPROVED BY: Alex	3/14-08'	.XX ±0.15/.006 .XX' ±			



瀚荃股份有限公司
CviLux Corporation

SCALE	4 / 1	SHEET	1 OF 1
-------	-------	-------	--------