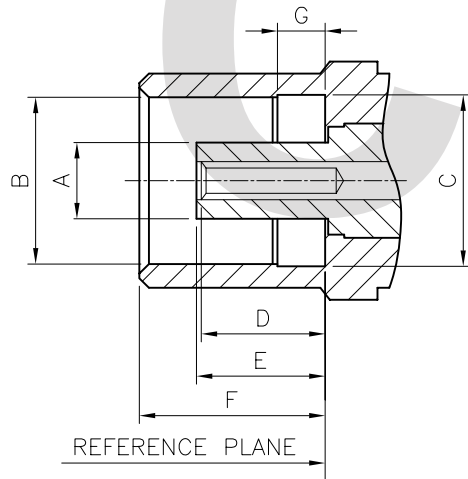
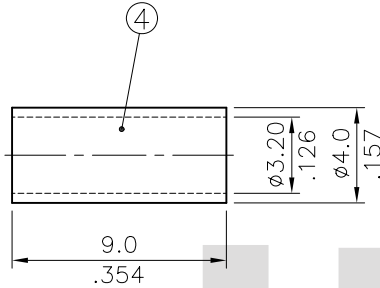
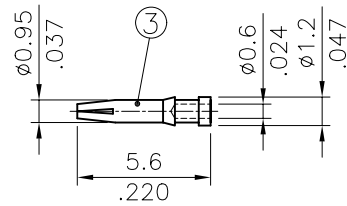
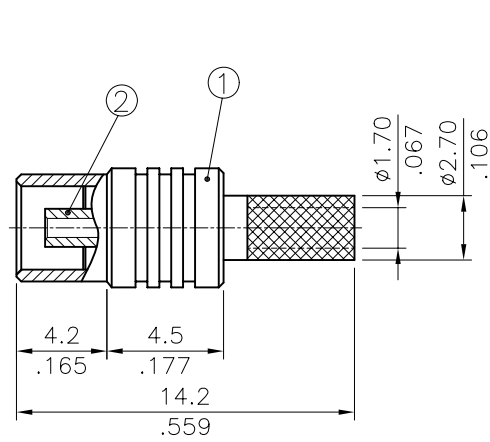


No.	DESCRIPTION	MATERIAL	FINISH	Q'TY
1	BODY	BRASS	GOLD PLATED	1
2	INSULATOR	TEFLON	—	1
3	CONTACT	BRASS	GOLD PLATED	1
4	FERRULE	BRASS	GOLD PLATED	1



DIM.	Min.	Max.
A	1.80(.071)	1.97(.078)
B	3.43(.135)	3.48(.137)
C	3.61(.142)	3.75(.147)
D	2.31(.091)	2.79(.110)
E	2.61(.103)	2.79(.110)
F	4.00(.157)	4.12(.162)
G	0.75(.030)	0.85(.033)

Specifications:

Electrical

Impedance: 50 $\Omega$   
 Frequency Range: 0–6 GHz  
 Working Voltage: 335 VRMS Max.  
 Dielectric Withstanding Voltage: 1000 VRMS Min.  
 VSWR: 1.3 Max.  
 Contact Resistance  
 Center contact: 5m $\Omega$  Max.  
 Outer Contact: 2.5m $\Omega$  Max.  
 Insulator Resistance: 1000M $\Omega$  Min.

Mechanical & Environmental

Engagement Force: 3.4 lbs. Max.  
 Disengagement Force: 4.5 lbs. Max.  
 Contact Retention: 4 lbs. Min.  
 Durability (Mating): 500 cycles Min.  
 Temperature Range: –65°C to 155°C  
 Vibration: 3 cycles, 3 opposite directions, 10–150 Hz  
 10–60 Hz: 0.75mm/0.030 in., 60–150 Hz 10G's  
 Thermal Shock: MIL-STD-202 Method 107  
 Humidity: MIL-STD-202 Method 103 Test Cond.B  
 Mechanical Shock: MIL-STD-202 Method 213 Test Cond.B

Interface Mating Dimensions

RoHS Compliant

SYM	NAME	DATE	REVISIONS	APPROVED BY:	DATE	UNIT: mm / inch	TITLE: MCX SERIES STRAIGHT CABLE CRIMP TYPE JACK CONN.	DRAWING NO. CR0301SA	PART NO. CR03S01225000	SCALE	SHEET	OF	1
4													
3													
2													
1													



瀚荃股份有限公司  
CviLux Corporation