

Specifications:

Electrical

Impedance: 50Ω

Frequency Range: 0–4 GHz

Working Voltage: 335 VRMS Max.

Dielectric Withstanding Voltage: 1000 VRMS Min.

VSWR: 1.3 Max.

Contact Resistance

Center contact: 6mΩ Max.

Outer Contact: 2mΩ Max.

Insulator Resistance: 1000MΩ Min.

Mechanical & Environmental

Engagement/Disengagement Force: 14 lbs. Max.

Contact Retention: 4 lbs. Min.

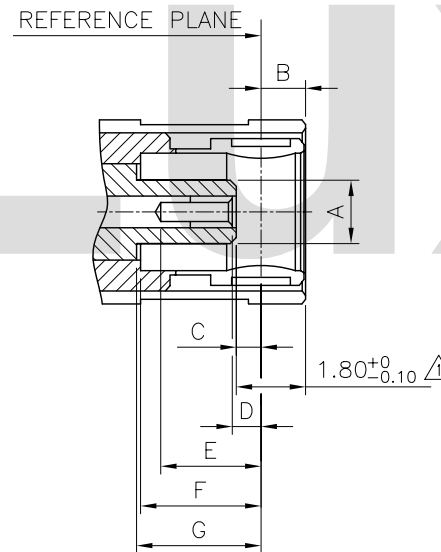
Durability (Mating): 500 cycles Min.

Temperature Range: -65°C to 165°C

Vibration: MIL-STD-202 Method 204 Test Cond.B

Salt Spray: MIL-STD-202 Method 101 Test Cond.B

Thermal Shock: MIL-STD-202 Method 107 Test Cond.B



DIM.	Min.	Max.
A	2.00(.079)	2.06(.081)
B	—	1.62(.064)
C	0.18(.007)	—
D	0.18(.007)	0.94(.037)
E	2.97(.117)	—
F	3.58(.141)	—
G	3.58(.141)	—

No.	DESCRIPTION	MATERIAL	FINISH	Q'TY
1	INNER BODY	BRASS	GOLD PLATED	1
2	INSULATOR	TEFLON	—	1
3	BODY	BRASS	GOLD PLATED	1
4	CONTACT	BRASS	GOLD PLATED	1
5	FERRULE	BRASS	GOLD PLATED	1

Interface Mating Dimensions

RoHS Compliant

SYM	NAME	DATE	REVISIONS	APPROVED BY:	DATE	UNIT:	TITLE:	DRAWING NO.	SCALE	PART NO.	SHEET	OF
4					DATE	mm / inch	SMB SERIES STRAIGHT	CR0207SB	2 / 1	CR02P01225000	1	1
3					Sun	5/15-09'	CABLE CRIMP TYPE PLUG CONN.					
2					Eisley	5/15-09'						
1	Sun	5/15-09'	ECN09249	Eisley	5/15-09'	X. ±0.50/.020						
				Alex	5/15-09'	.X ±0.30/.012						
						.XX ±0.15/.006						

