

No.	DESCRIPTION	MATERIAL	FINISH	Q'TY
1	BODY	BRASS	GOLD PLATED	1
2	CONTACT	BRASS	GOLD PLATED	1
3	INNER BODY	BRASS	GOLD PLATED	1
4	INSULATOR	TEFLON	-	1
5	INSULATOR	TEFLON	-	1

Specifications:

Electrical

Impedance: 50Ω

Frequency Range: 0-4 GHz

Working Voltage: 335 VRMS Max.

Dielectric Withstanding Voltage: 1000 VRMS Min.

VSWR: 1.5 Max.

Contact Resistance

Center contact: 6mΩ Max.

Outer Contact: 2mΩ Max.

Insulator Resistance: 1000MΩ Min.

Mechanical & Environmental

Engagement/Disengagement Force: 14 lbs. Max.

Contact Retention: 4 lbs. Min.

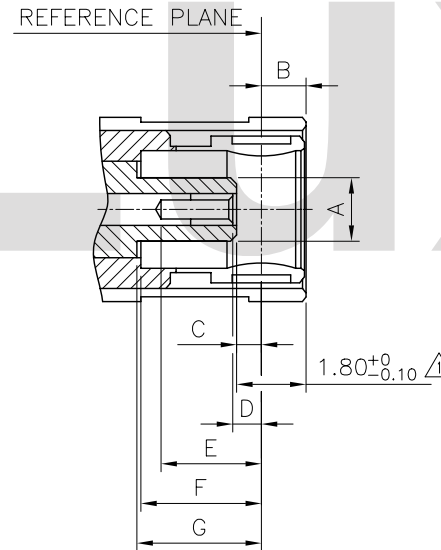
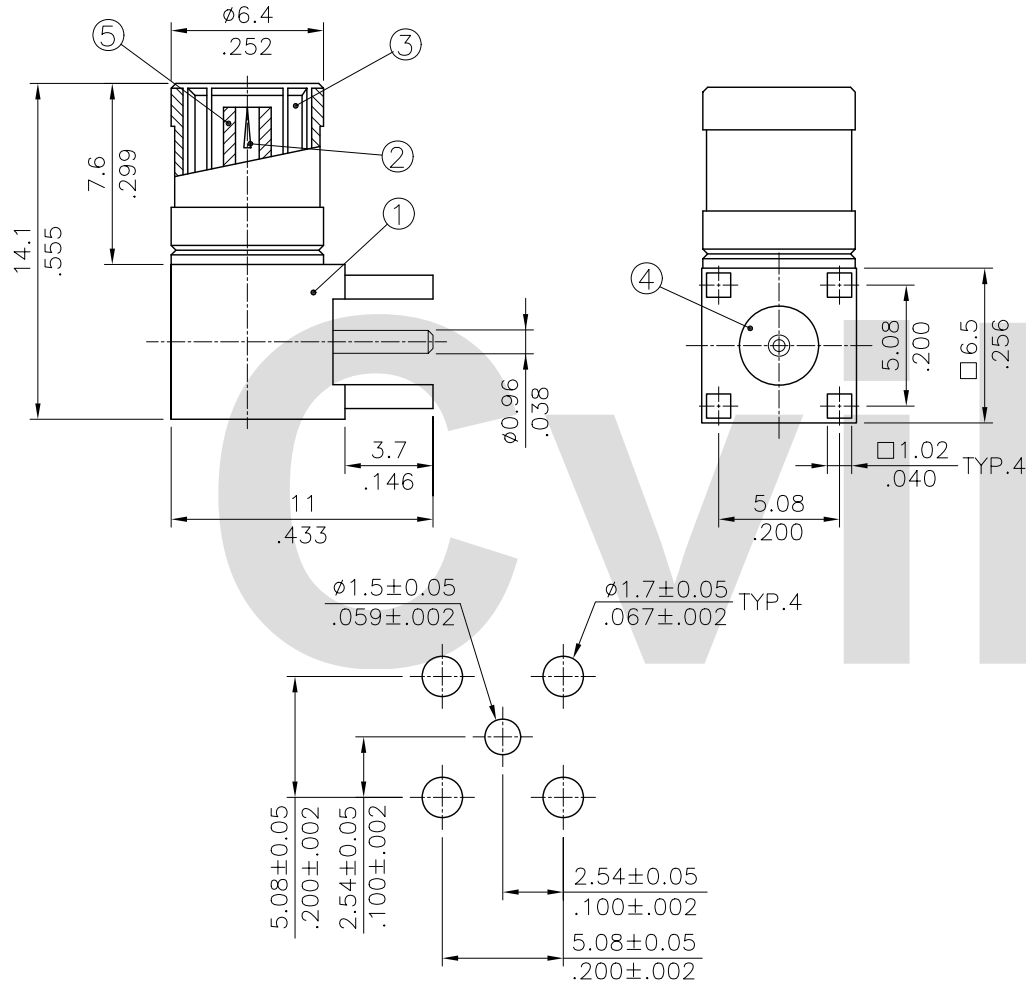
Durability (Mating): 500 cycles Min.

Temperature Range: -65°C to 165°C

Vibration: MIL-STD-202 Method 204 Test Cond.B

Salt Spray: MIL-STD-202 Method 101 Test Cond.B

Thermal Shock: MIL-STD-202 Method 107 Test Cond.B



DIM.	Min.	Max.
A	2.00(.079)	2.06(.081)
B	-	1.62(.064)
C	0.18(.007)	-
D	0.18(.007)	0.94(.037)
E	2.97(.117)	-
F	3.58(.141)	-
G	3.58(.141)	-

Recommended P.C. Board Layout

Interface Mating Dimensions

RoHS Compliant

SYM	NAME	DATE	REVISIONS	APPROVED BY:	DATE	UNIT: mm / inch	TITLE: SMB SERIES RIGHT ANGLE PCB MOUNT TYPE PLUG CONN.	DRAWING NO.	PART NO.	SHEET	OF
4											
3											
2											
1	Sun	5/15-09'	ECN09249	Eisley	5/15-09'	X. ±0.50/.020 .X ± .1'	MATERIAL:	CR0206SB	CR02P04225000	SCALE	3 / 1
						.X ±0.30/.012 .X ±	FINISH:				
						.XX ±0.15/.006 .XX ±					

CIVILUX CORP
2009.05.19
ISSUED



瀚荃股份有限公司
CviLux Corporation