

Material:

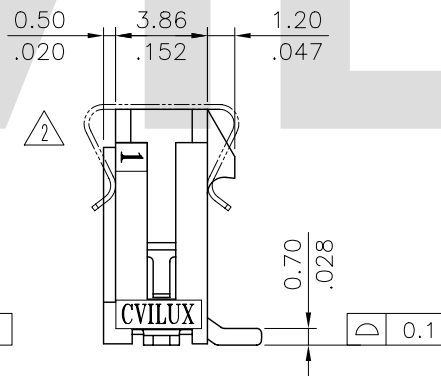
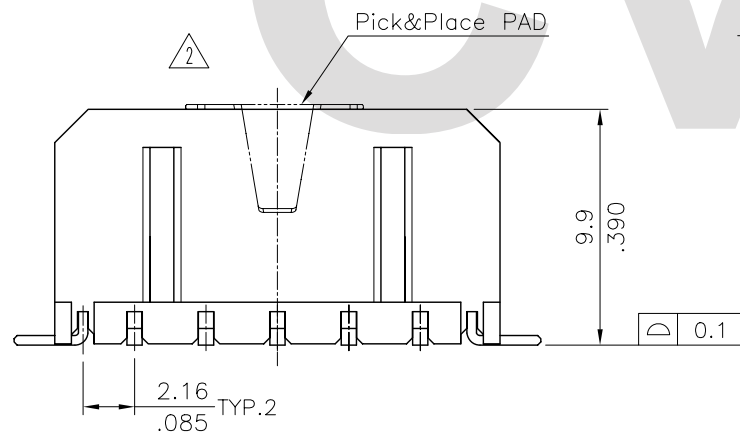
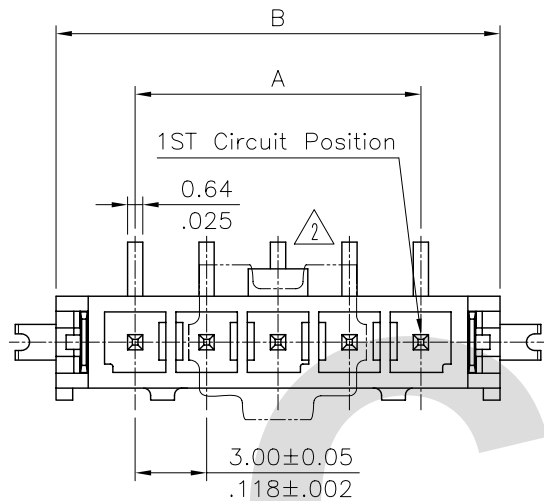
* Insulation: Nylon 6T 94V-0, Color Black

* Contact: Brass

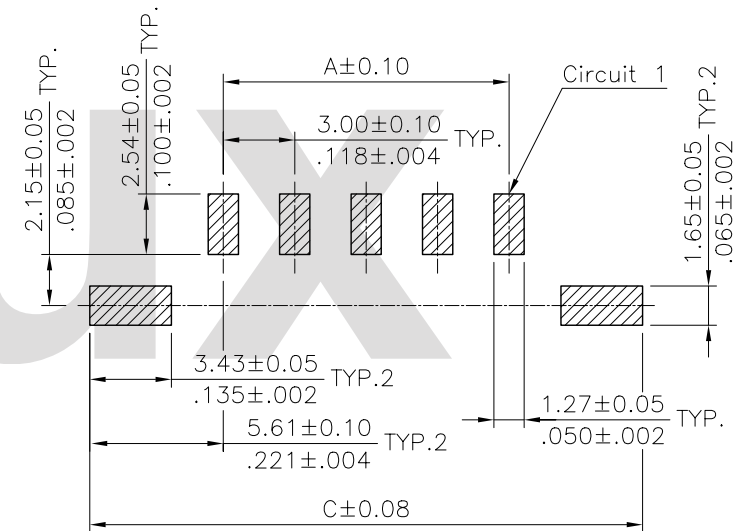
Ordering Code:

CP35 ** P * V S T - S - LF
 ① ② ③ ④ ⑤ ⑥ ⑦ ⑧ ⑨

- ① Series No.
- ② No. of Circuits: 02~12
- ③ Contact type: P= Plug
- ④ Contact plated:
 1= Matte Tin Plated over Nickel
 A= Selective Gold Flash Plated over 1.27μm(50μ") Nickel
 B= Selective 0.38μm(15μ") Gold Plated over 1.27μm(50μ") Nickel
 C= Selective 0.76μm(30μ") Gold Plated over 1.27μm(50μ") Nickel
- ⑤ V= Straight
- ⑥ Mount type : S= SMT Type
- ⑦ T= With Fixed Tabs
 (Reel Packing With Pick&Place PAD)
- ⑧ S= Single Row Header
- ⑨ LF= Lead Free soldering process




CIRCUITS	DIM.A	DIM.B	DIM.C
2	3.00(.118)	9.65(.380)	14.2(.559)
3	6.00(.236)	12.65(.498)	17.2(.677)
4	9.00(.354)	15.65(.616)	20.2(.795)
5	12.00(.472)	18.65(.734)	23.2(.913)
6	15.00(.591)	21.65(.852)	26.2(1.031)
7	18.00(.709)	24.65(.970)	29.2(1.150)
8	21.00(.827)	27.65(1.089)	32.2(1.268)
9	24.00(.945)	30.65(1.207)	35.2(1.386)
10	27.00(1.063)	33.65(1.325)	38.2(1.504)
11	30.00(1.181)	36.65(1.443)	41.2(1.622)
12	33.00(1.299)	39.65(1.561)	44.2(1.740)



Recommended P.C. Board Layout

Lead Free Process

RoHS Compliant

SYM	NAME	DATE	REVISIONS	APPROVED BY:	DATE	UNIT: mm / inch	TITLE: 3.00mm PITCH STRAIGHT SMT TYPE POWER CONN.	 瀚荃股份有限公司 CviLux Corporation
④	Sun	9/30-08'	ECR08113-1/ECN08475					
③	Eager	11/26-07'	ECN07471	DRAWN BY:	Sun	9/30-08'	TOLERANCE UNLESS OTHERWISE SPECIFIED	
②	Eager	11/09-07'	ECN07463	ENGINEER:	Eisley	10/1-08'	.X ± 0.30/.012 X' ± 1'	
①	Eager	10/04-07'	ECN07414	CHECKED BY:	David	10/1-08'	.XX ± 0.20/.008 .X' ±	
				APPROVED BY:	Alex	10/1-08'	.XXX ± 0.10/.004 .XX' ±	
								DRAWING NO. CP3571SD
								PART NO. CP35**P*VST-S-LF
								SCALE 3 / 1
								SHEET 1 OF 2

2008.10.07
 ISSUED

