

Material:

* Insulation: Nylon 66, Color Nature

* Contact: Phosphor Bronze

Ordering Code:

CI93 ** S 1 000
 ① ② ③ ④ ⑤

① Series No.

② No. of Circuits

③ S= Connector Housing

④ Plating option:

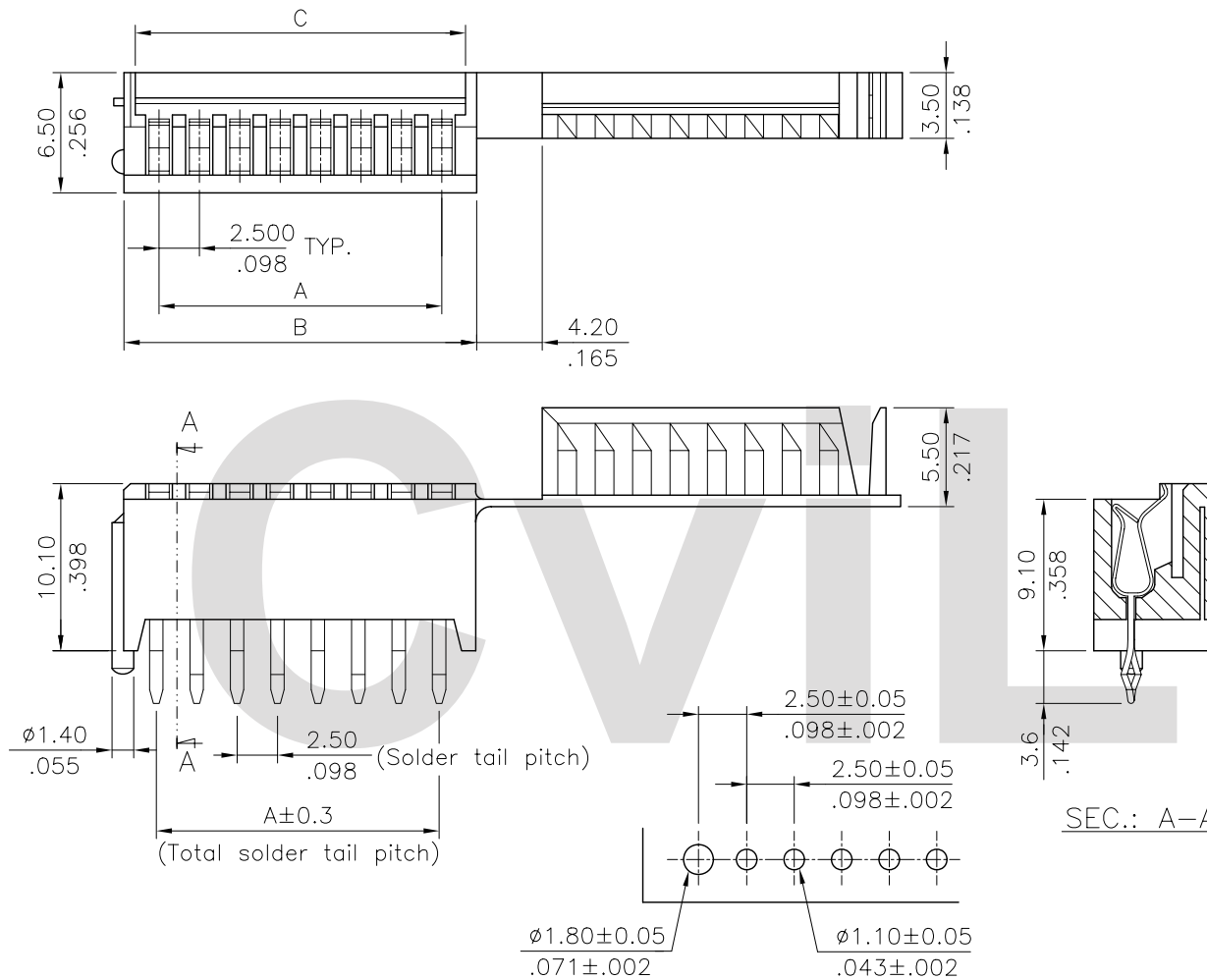
1 = 3.05μm(120μ") Min. Tin

over 0.76μm(30μ") Nickel

⑤ Other option: 000= UL 94V-0(Standard)

00M= UL 94V-2

Circuits	Dimension		
	A	B	C
3	5.00(.197)	10.1(.398)	8.20(.324)
4	7.50(.295)	12.6(.496)	10.70(.421)
5	10.00(.394)	15.1(.594)	13.20(.520)
6	12.50(.492)	17.6(.693)	15.70(.618)
7	15.00(.591)	20.1(.791)	18.20(.716)
8	17.50(.689)	22.6(.890)	20.70(.815)
9	20.00(.787)	25.1(.988)	23.20(.913)
10	22.50(.886)	27.6(1.087)	25.70(1.012)



Recommended P.C. Board Layout

RoHS Compliant

4																			
3																			
2																			
1																			
SYM	NAME	DATE	REVISIONS	APPROVED BY:	Alex	02/01-02'	.XXX ± 0.10/0.04	.XX* ±											
				ENGINEER:	David	02/01-02'	.XX ± 0.20/0.010	.X* ±											
				CHECKED BY:	David	02/01-02'	.X ± 0.30/0.012	.X* ± 1'											
				DRAWN BY:	Eisley	02/01-02'	TOLERANCE UNLESS OTHERWISE SPECIFIED												
							UNIT: mm / inch												
							TITLE: 2.50MM(.098") RIBBON WIRE TRAP CONNECTOR												
							MATERIAL:												
							FINISH:												
							DRAWING NO.	CI9301SF	PART NO.	CI93**S1000	CI93**S100M								
							SCALE	2 / 1	SHEET	1	OF	1							

CVILUX.CORP
 2002.02.01
 ISSUED

瀚荃股份有限公司
 CviLux Corporation